

VCX NANO Client Function

Introduction&Device Connection Method

Introduction



i. VCX NANO client installation, driver installation/firmware update methods:

VX MANAGER installation file download link: <http://www.vxdiag.net>

VXDIAG

DownloadContact UsVXDIAG WikiLang[EN]

VX Manager

Driver update log

Current Version:V1.8.9.0601
UPDATE:2022-06-01

Beta Version:V1.8.9 Beta
UPDATE:2024-01-12
Adapt to VCX FD device

Click to download

VX Manager

VX Manager Beta

Client requirements

Windows 7/8/10

PORSCHE

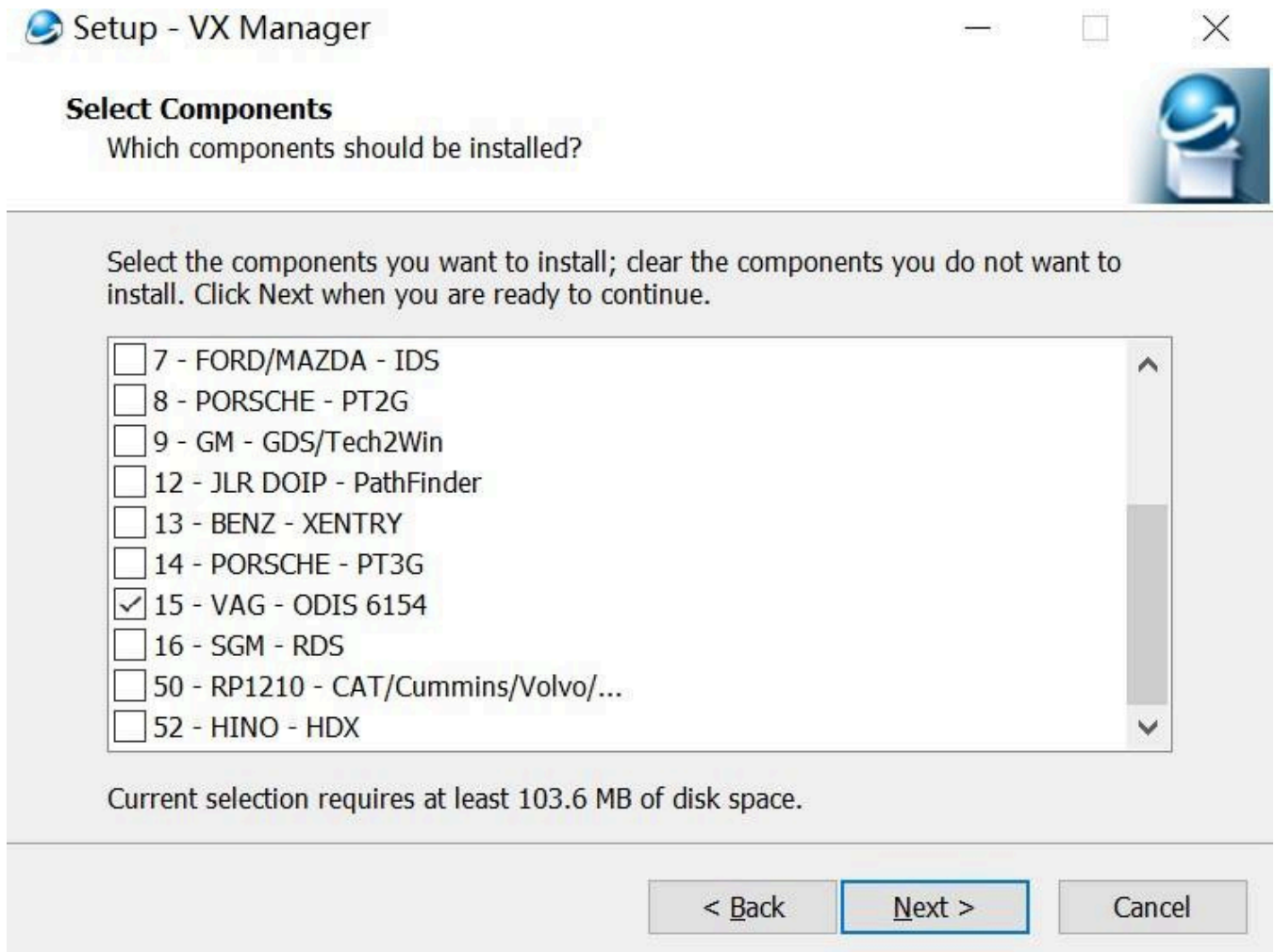
120.76.230.87

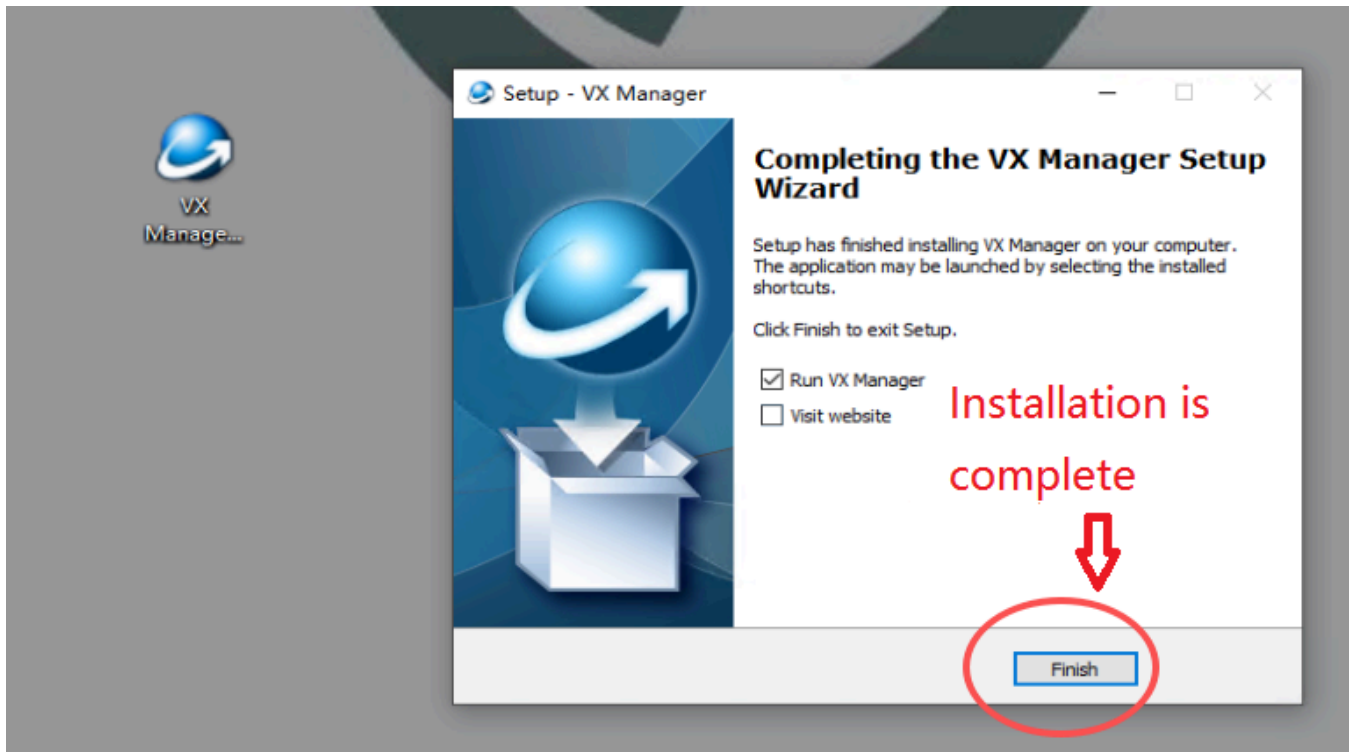
1、 After installing the ODIS software, run the installation package VX Manager X.X.X.XXXX.exe and follow the instructions to click Next to proceed to the next step,



VX Manager 1.8.9.0601.exe

Select the driver installation according to the supported vehicle models of the NANO device (check 15-VAG - ODIS 6154 here), click NEXT next after selection, and continue until the installation is complete.





2、 Diagnostic head connected to USB cable inserted into computer USB port;



Open the desktop VX Manager client to view device information.



ALLScanner

Device Diagnostic J2534 App Remote VXDIAG

Information Licenses Configure

Hardware	
Name	VCX-NANO
Serial Number	NEAVA31553
Interface	AUTO
Firmware	
Name	VCXA.BIN
Version	1.9.4.2
Date	2023-03-31
Driver	
Name	SDK
Version	1.8.9.0
Date	2022-06-01



ReConnect Device Test Restart

Firmware Update License DoIP Switch

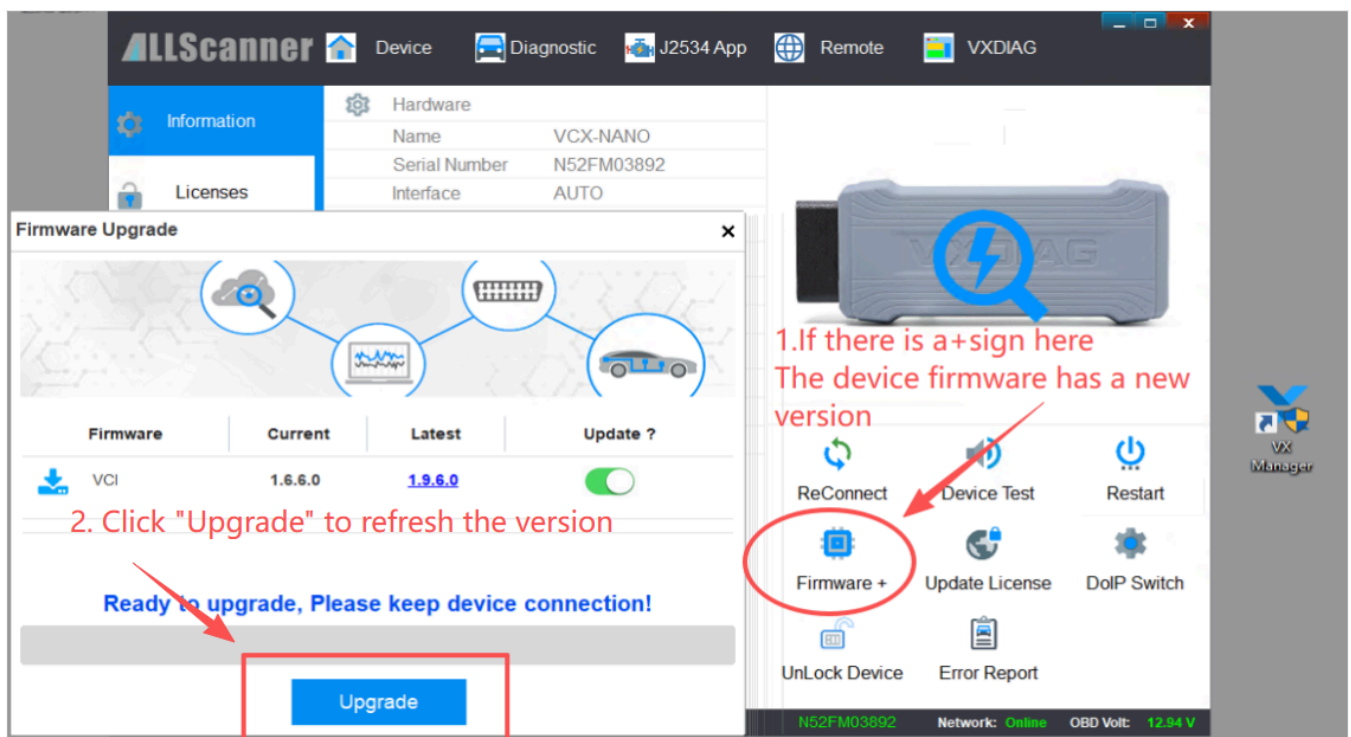
UnLock Device Error Report

Version: 1.8.9.0001 Language: English

NEAVA31553 Network: Online OBD Volt: 12.96 V

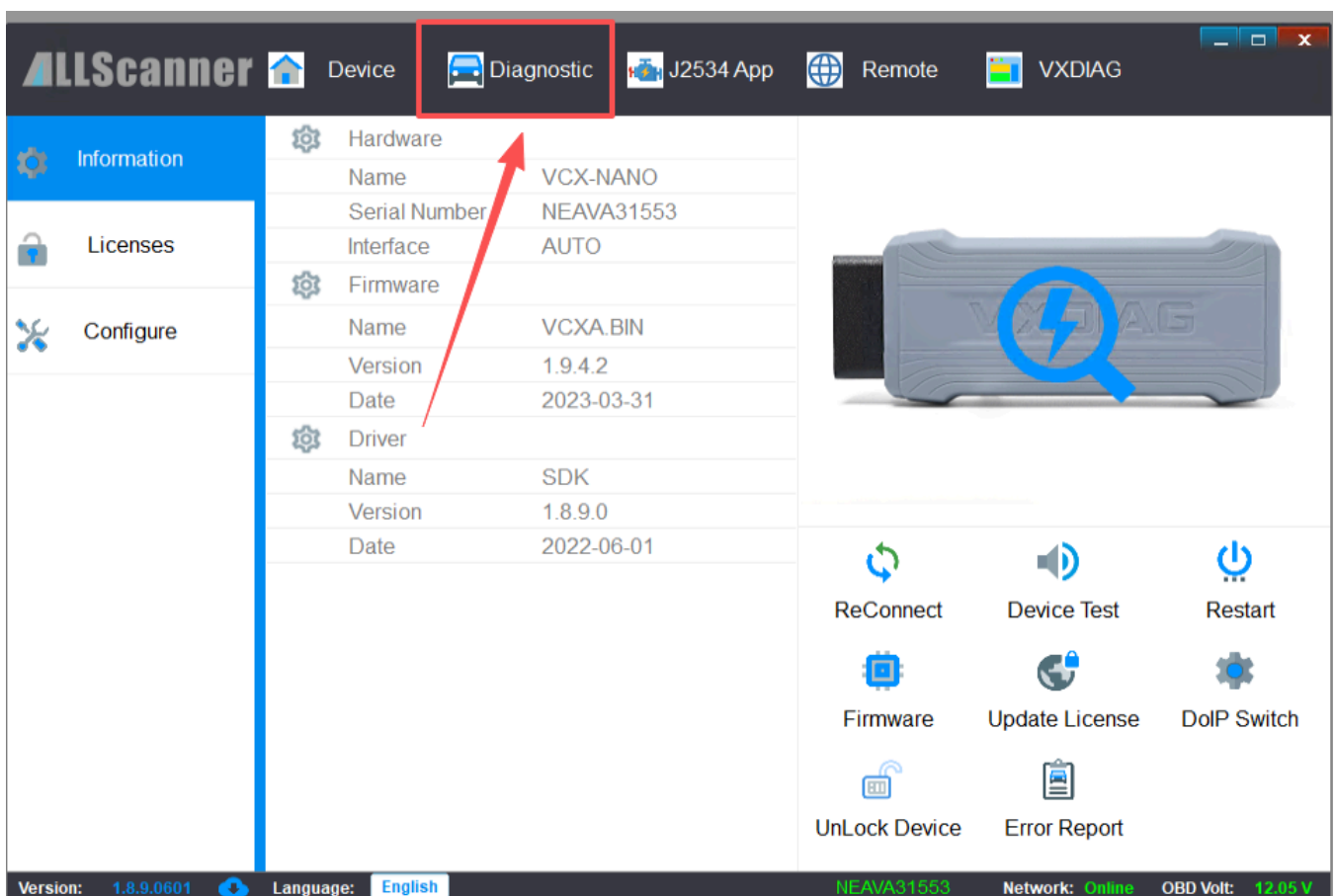
Can identify the serial number
Indicates that the device has been connected

3. Device firmware upgrade (as shown in the following figure):

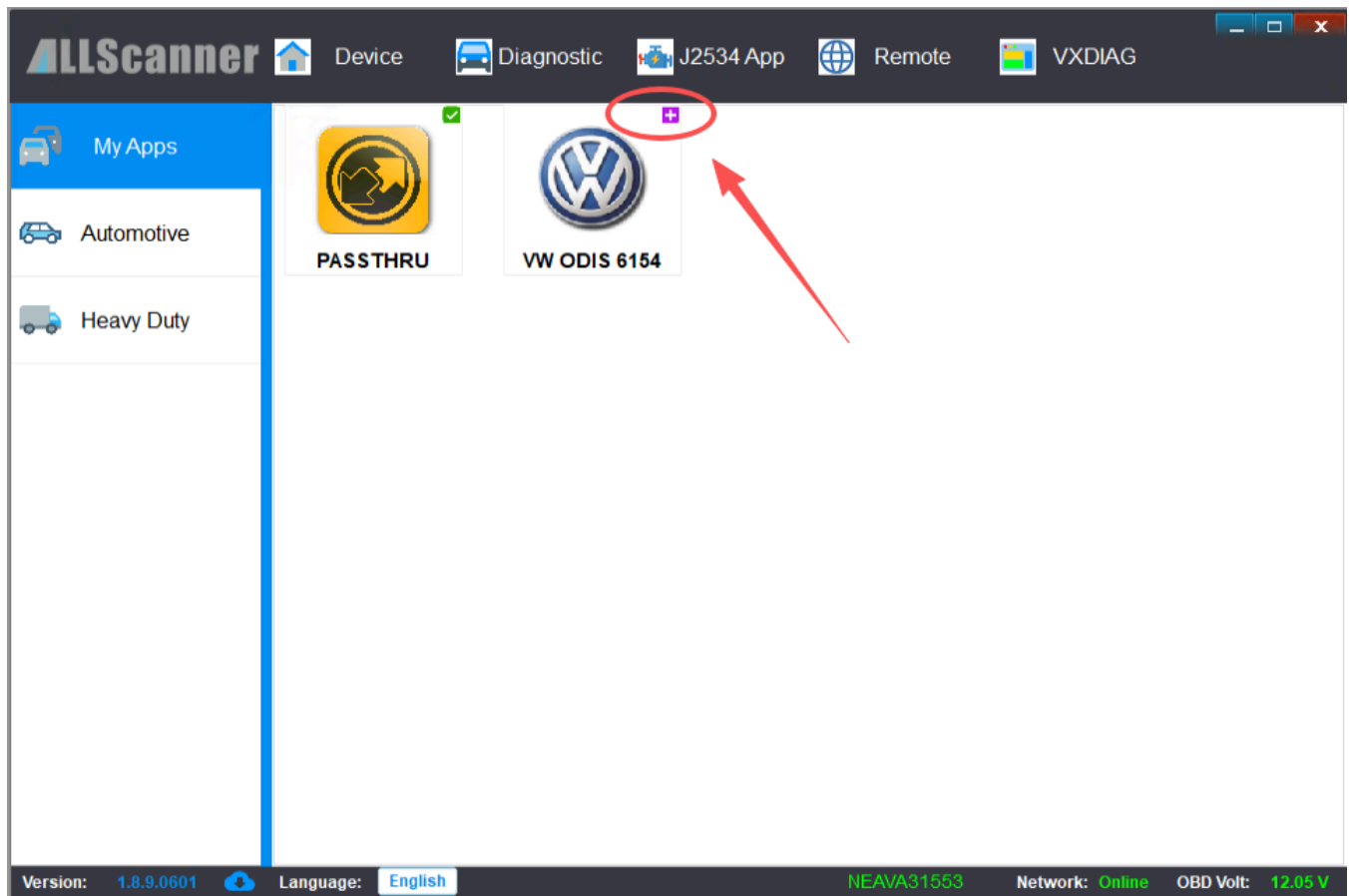


4.Driver update (installation)

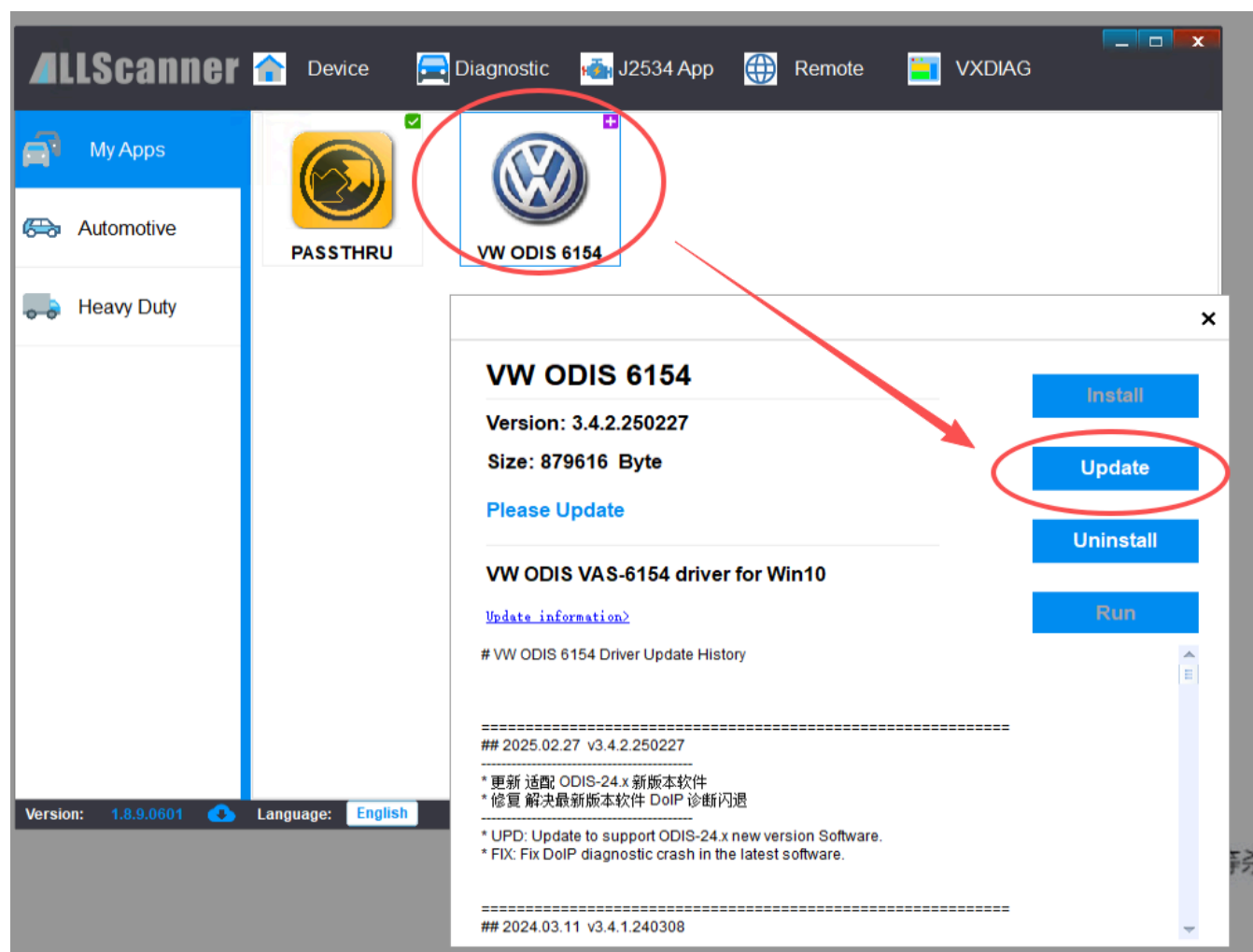
Click on 'Diagnostic' to enter the vehicle driver menu;



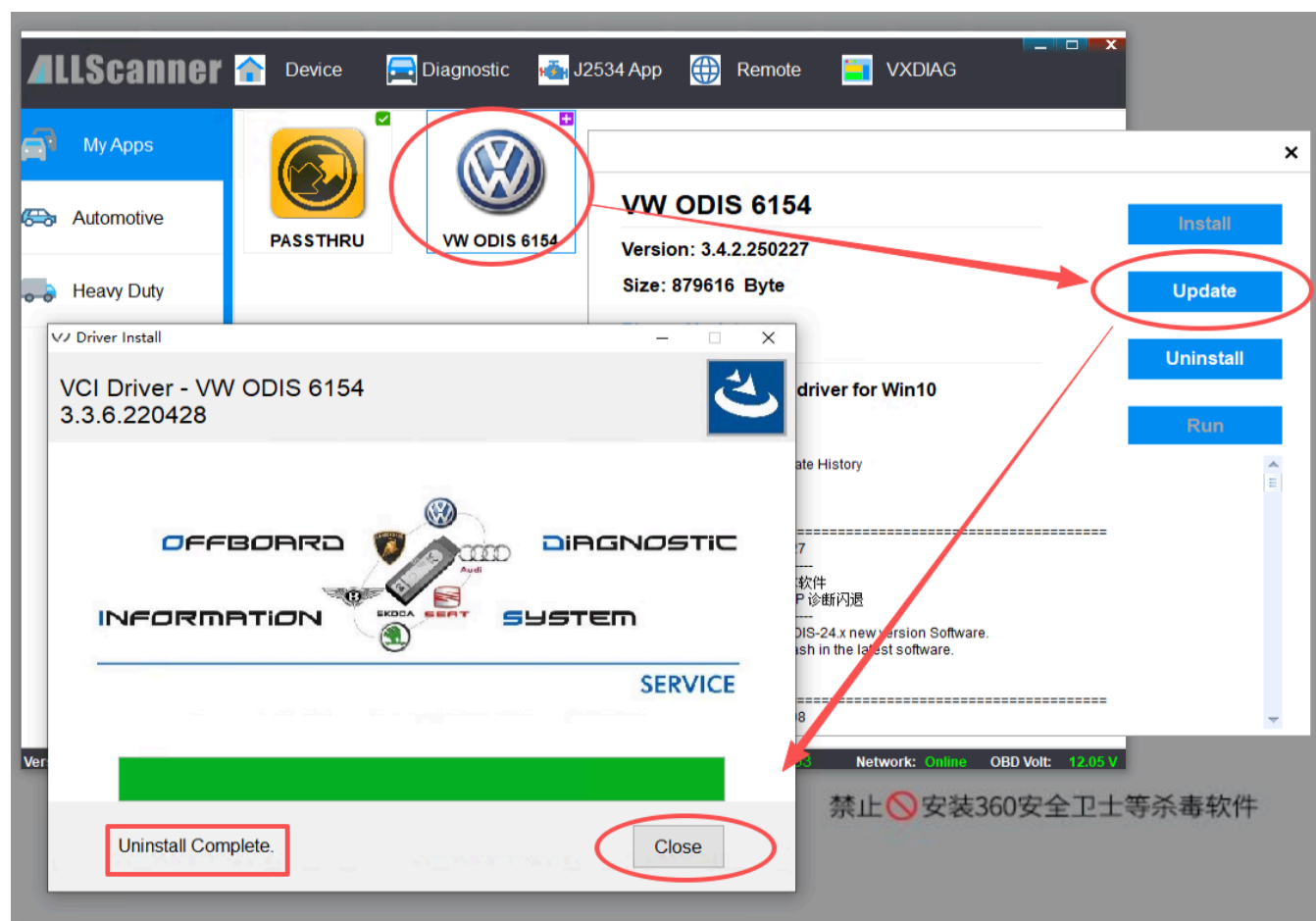
The purple “+” symbol in the upper right corner of the vehicle driver icon indicates that there is a new vehicle driver to be updated (as shown in the following figure) ;



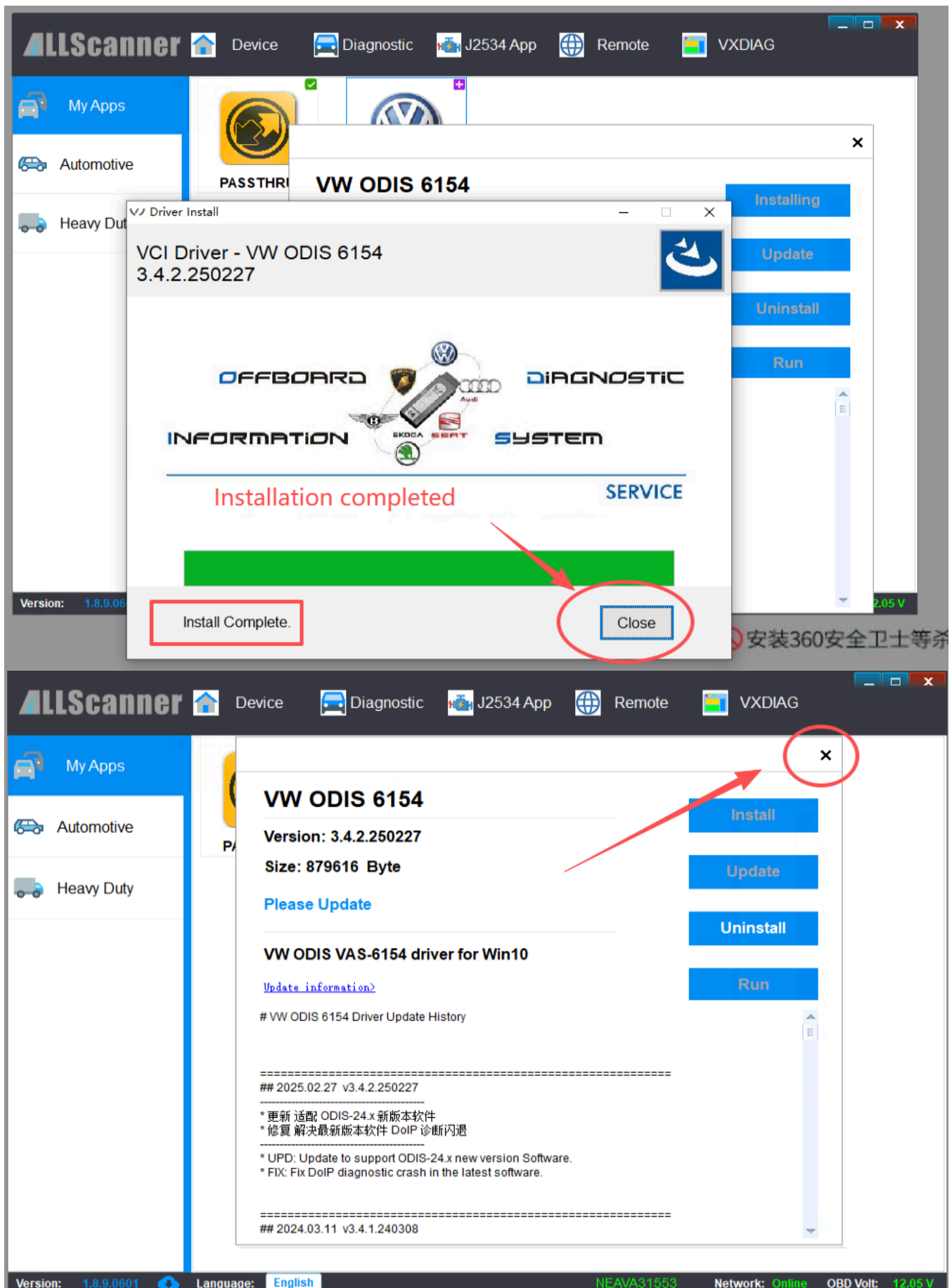
Click VW ODIS 6154 to open the driver installation interface;



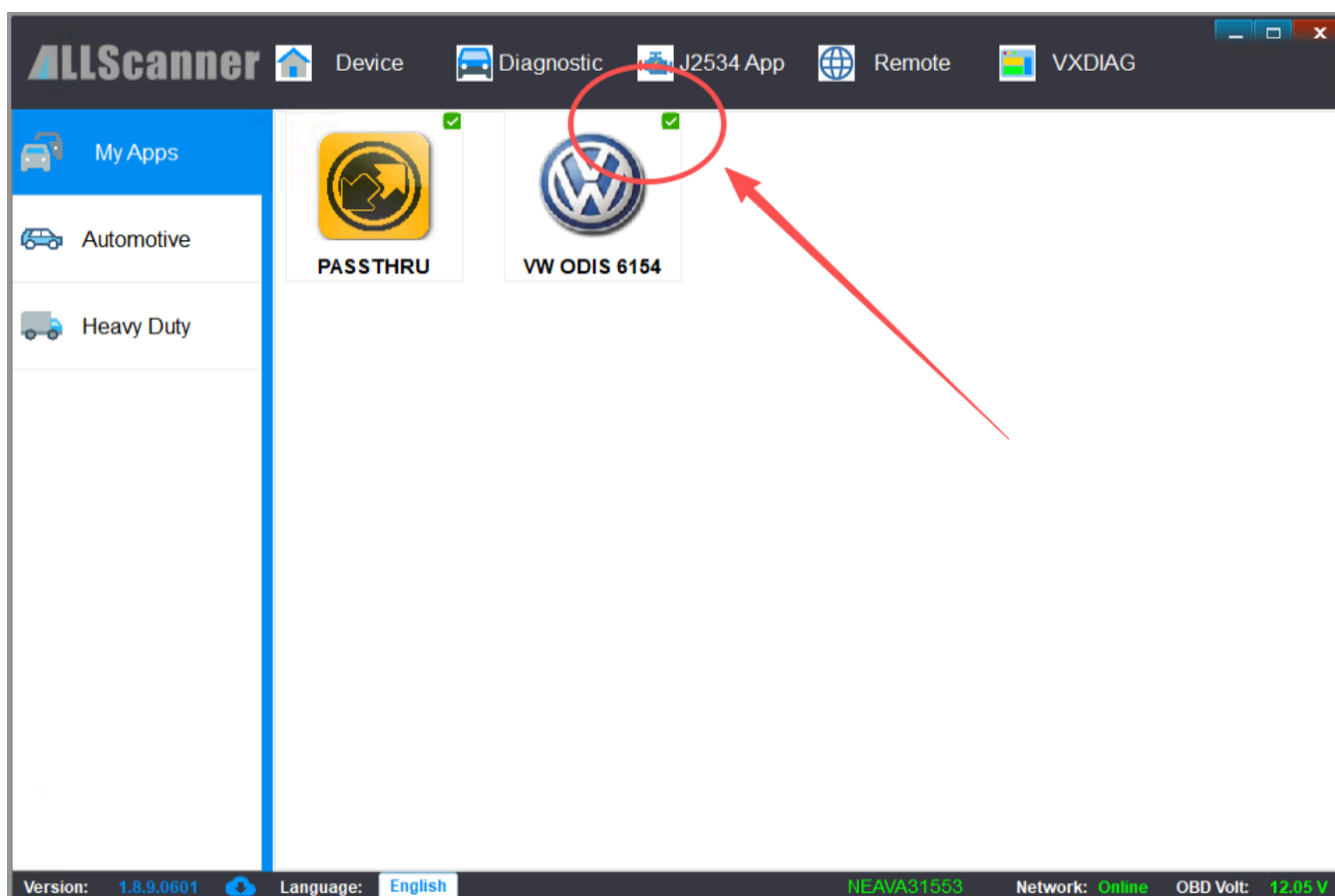
Click [Update] to start installing the new driver;



After completing the reading, click "Close" to complete the installation of the driver.

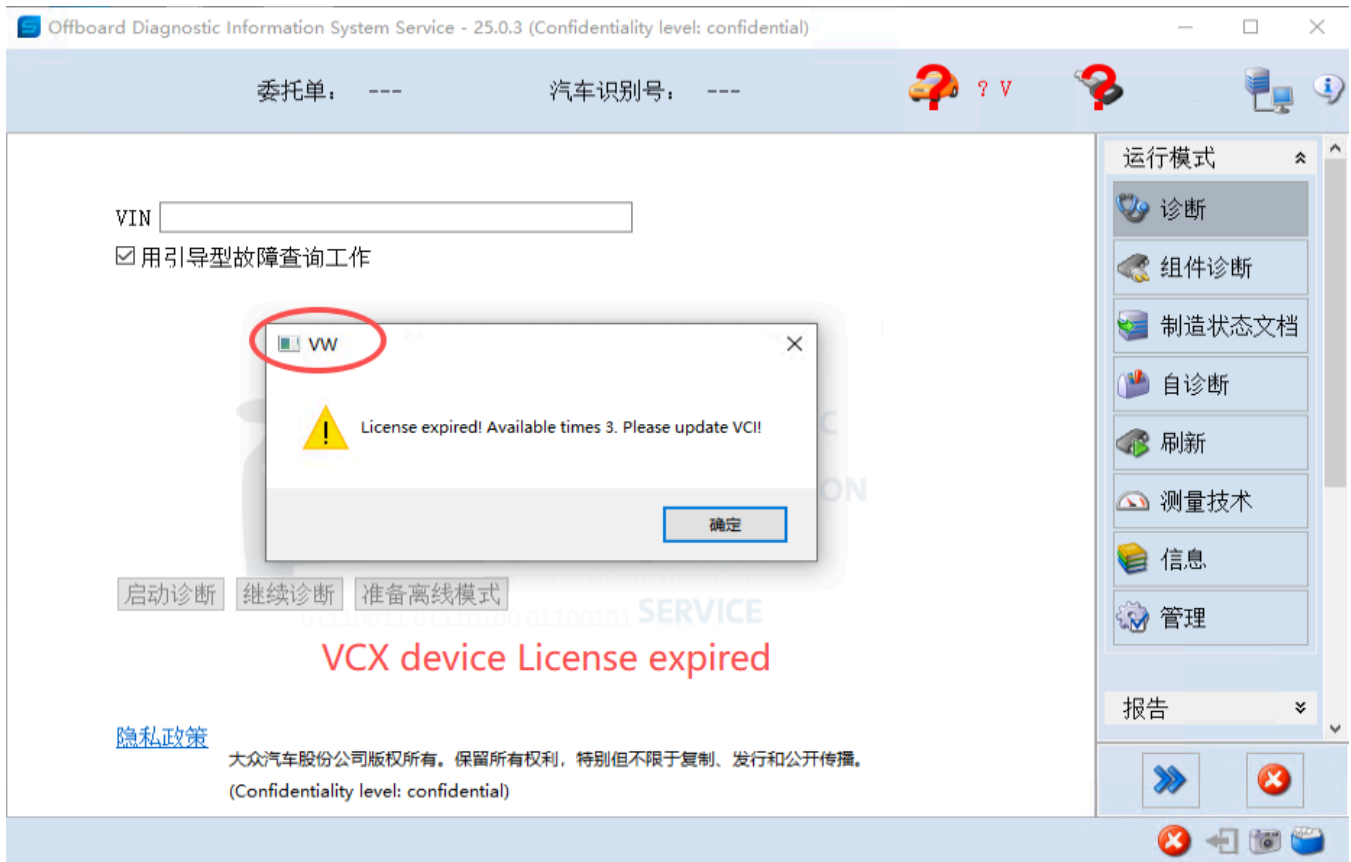


VW ODIS 6154 is marked with a green "√" and the driver is the latest version, no operation is required.



ii. Update License:

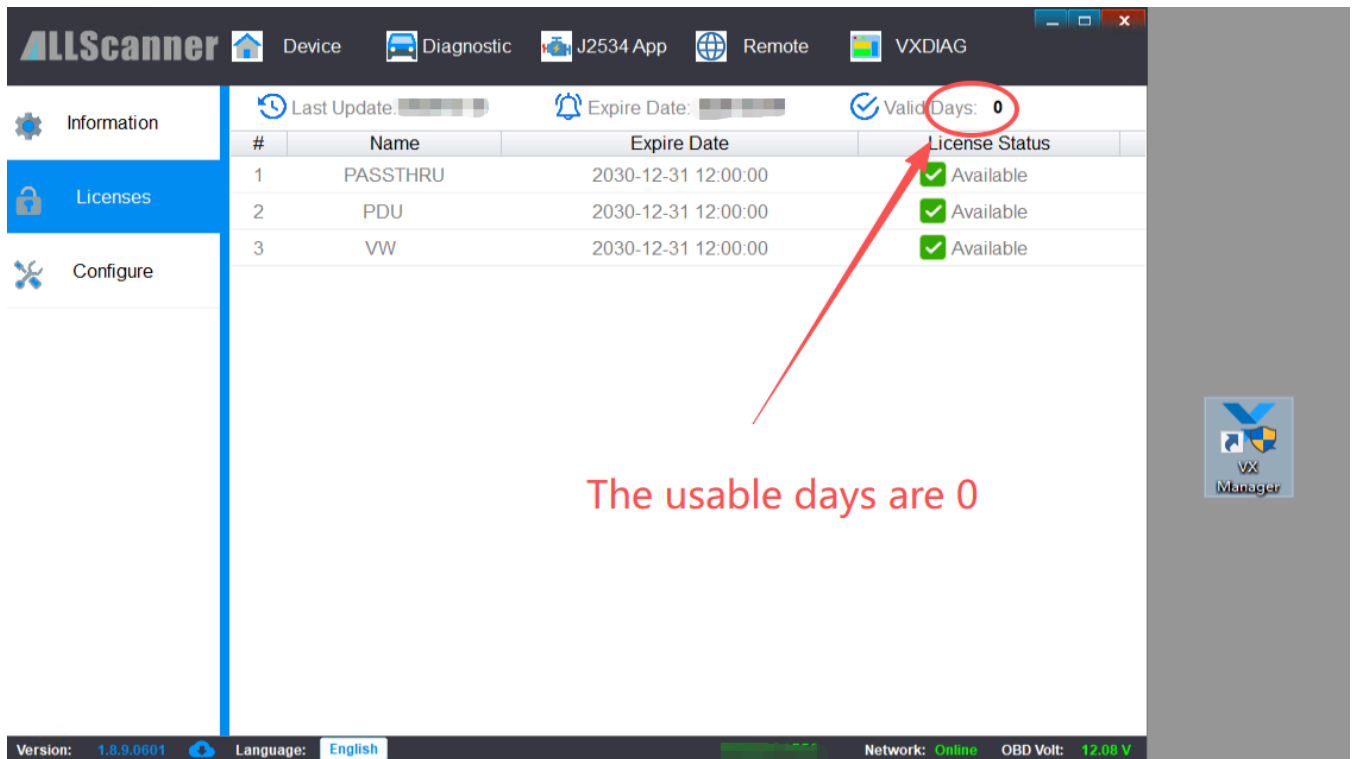
If the prompt for license expiration appears during use, simply open VX MANAGER and click to update the license. The specific steps are as follows:



→Diagnose computer networking! Return to the desktop and open VX MANAGER



→View device license status



ALLScanner

Device Diagnostic J2534 App Remote VXDIAG

Information Licenses Configure

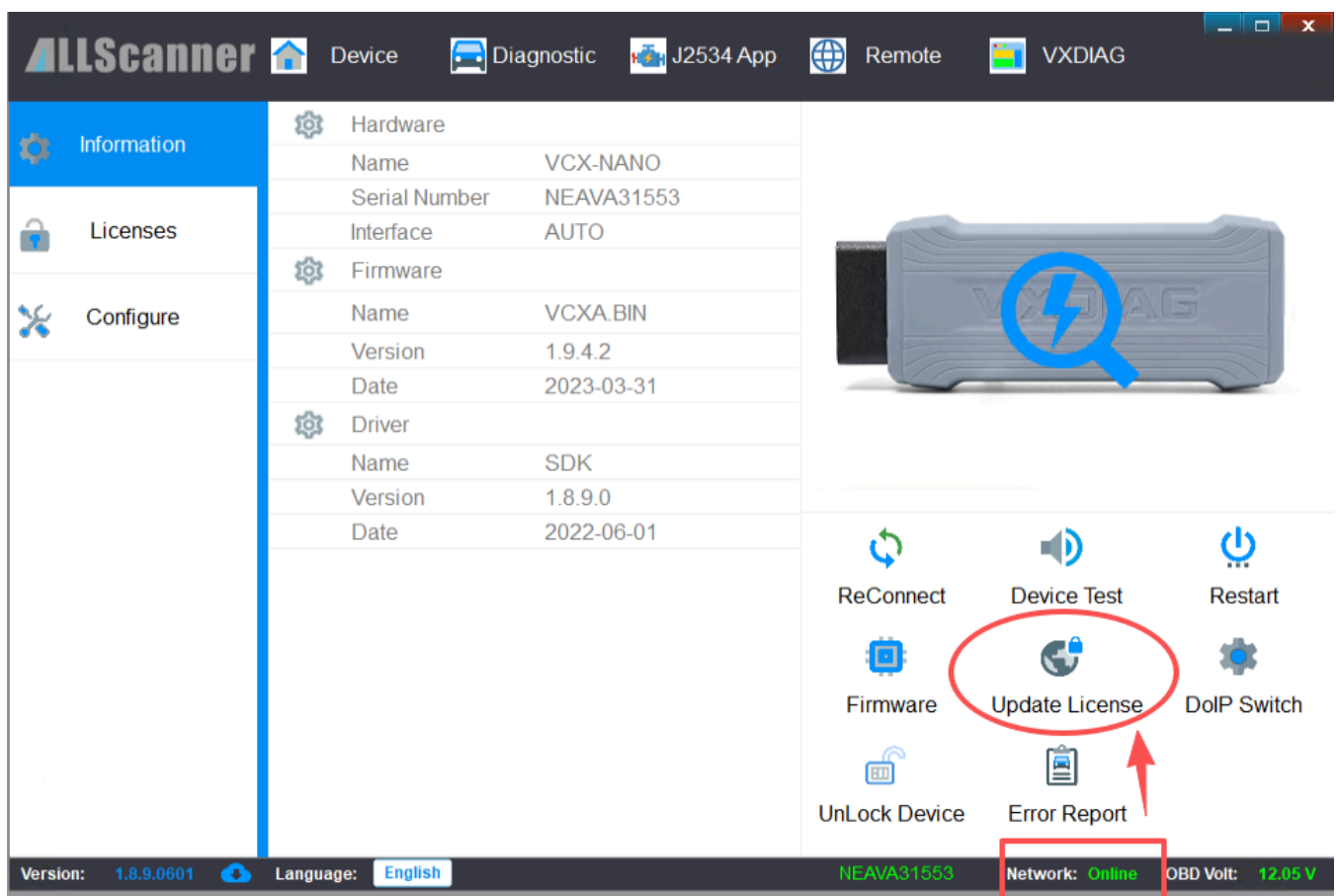
Last Update: [icon] Expire Date: [icon] Valid Days: **0**

#	Name	Expire Date	License Status
1	PASSTHRU	2030-12-31 12:00:00	✓ Available
2	PDU	2030-12-31 12:00:00	✓ Available
3	VW	2030-12-31 12:00:00	✓ Available

The usable days are 0

Version: 1.8.9.0601 Language: English Network: Online OBD Volt: 12.08 V

Click on [Information] → [Update License], and once the update is successful, you can continue to use it.



ALLScanner

Device Diagnostic J2534 App Remote VXDIAG

Information Licenses Configure

Hardware

- Name: VCX-NANO
- Serial Number: NEAVA31553
- Interface: AUTO

Firmware

- Name: VCXA.BIN
- Version: 1.9.4.2
- Date: 2023-03-31

Driver

- Name: SDK
- Version: 1.8.9.0
- Date: 2022-06-01

ReConnect Device Test Restart

Firmware **Update License** DoIP Switch

UnLock Device Error Report

Version: 1.8.9.0601 Language: English NEAVA31553 Network: Online OBD Volt: 12.05 V

License update successful!

Information

Licenses

Configure

Hardware

NameVCX-NANO

Serial NumberNEAVA31553

InterfaceAUTO

Firmware

Version1.8.9.0

Date2022-06-01

Device License has been updated! Contact dealer for more License.

Ok

ReConnect

Device Test

Restart

Firmware

Update License

DolP Switch

UnLock Device

Error Report

Version:1.8.9.0601

Language:English

NEAVA31553

Network:Online

OBD Volt:12.05 V

Information

Licenses

Configure

Last Update:2025-12-10

Expire Date:2026-02-08

Valid Days:60

#	Name	Expire Date	License Status
1	PASSTHRU	2030-12-31 12:00:00	Available
2	PDU	2030-12-31 12:00:00	Available
3	VW	2030-12-31 12:00:00	Available

Version:1.8.9.0601

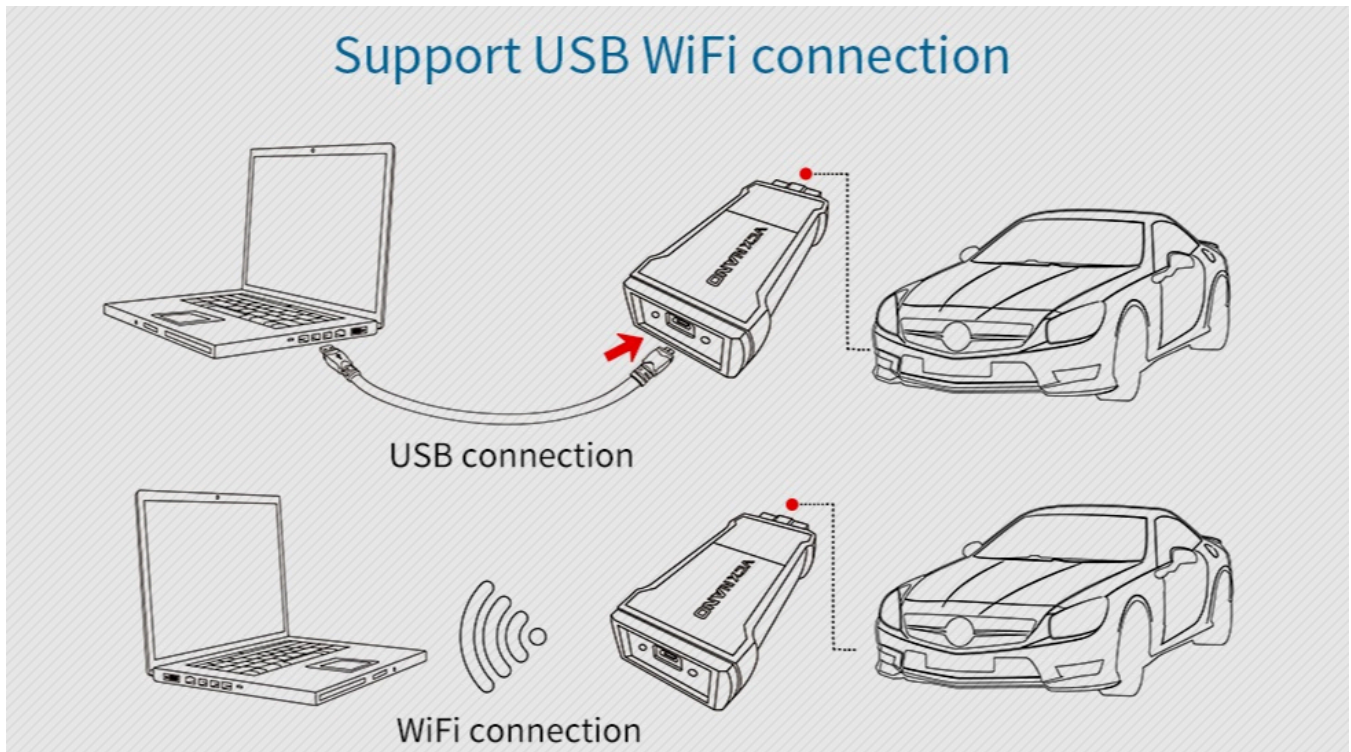
Language:English

NEAVA31553

Network:Online

OBD Volt:12.05 V

iii. Two connection methods of VCX NANO:



1、wired connection:

Connect the VCX NANO to the computer via a USB data cable, and plug the VCX NANO into the vehicle's OBDII interface.



Steps to view device serial port connection:

**Computer desktop → This computer → Right mouse button →
Management →**



This PC



Recycle Bin

Open (O)

Fixed to 'Quick Access'

Management (G)

Fixed to the 'Start' screen (P)

Map network driver (N)

Disconnect the network drive (C)

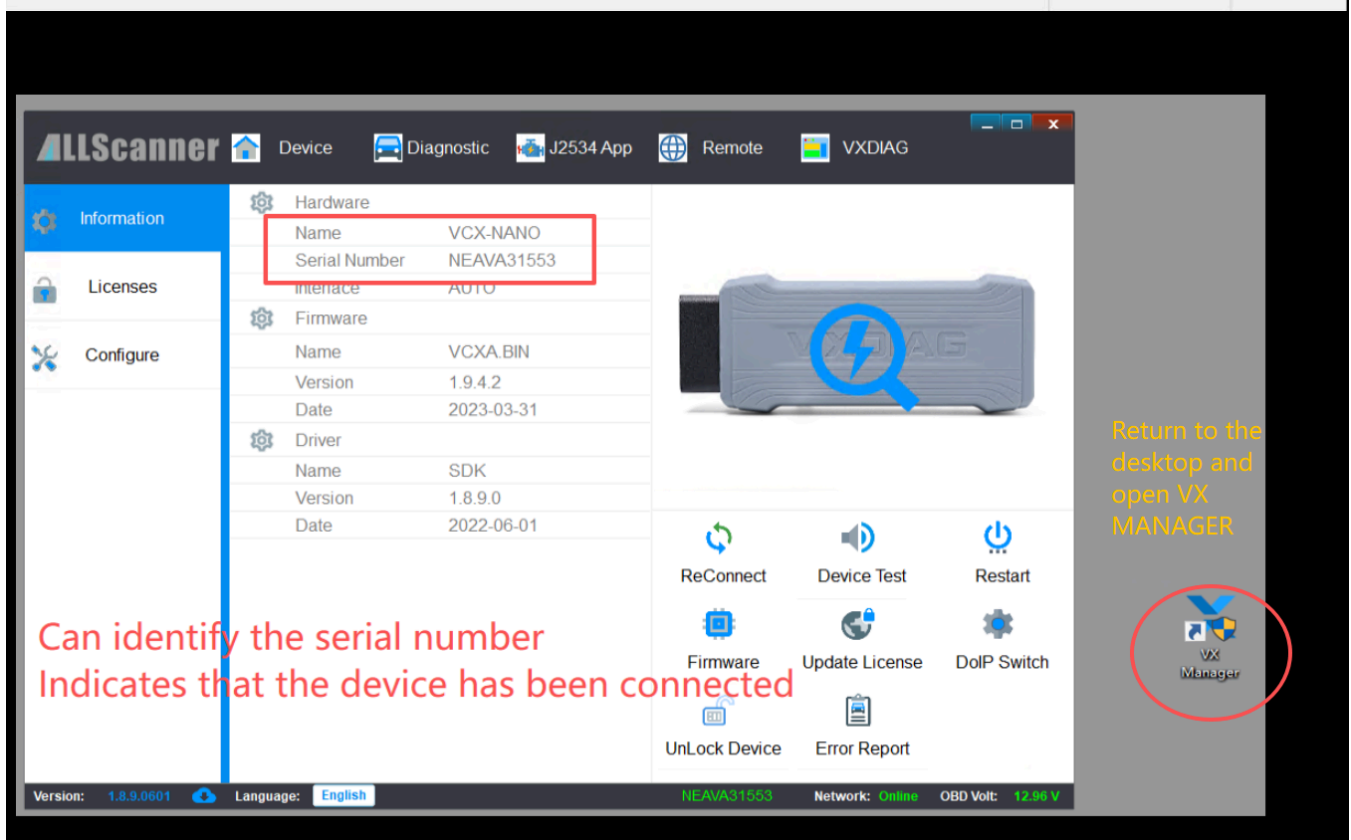
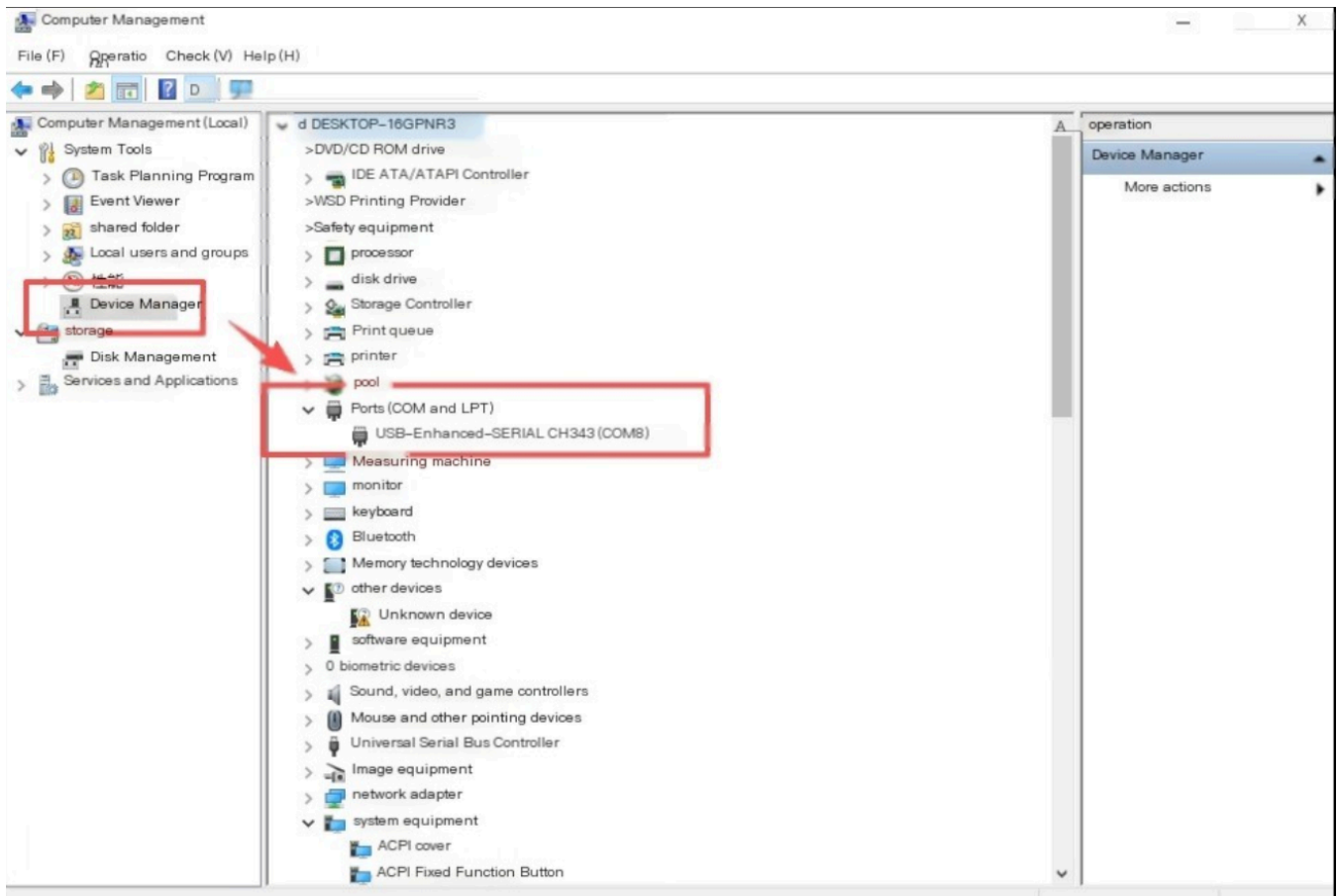
Create Shortcut (S)

Delete (D)

Rename (M)

Attribute (R)

→ Device Manager → Ports → USB-Enhanced-ERIAL CH343 (COM *), seeing this (as shown in the picture) indicates that the device is connected to the computer.



2、VCX NANO Wireless WIFI Connection Method:

VCX NANO plugged into the vehicle's OBDII interface → VCX NANO device powered on and started without the need for a USB data cable.



Click on WIFI network → Click on VCX-WIFI (device's WIFI signal name) → Automatic connection;

The password for the connection is: 12345678 (the new NANO does not require a password);



JMTCK
safety



VCX-WIFI
open

Others may see the information you send through this network



Auto-connect

connect



DolP-VCI-9EEA
safety



DolP-VCI-BFB3
safety



GT Neo6 SE
safety



DolP-VCI-F993

Network and Internet Settings

Change settings, such as setting a connection to be billed based on data usage.



WLAN

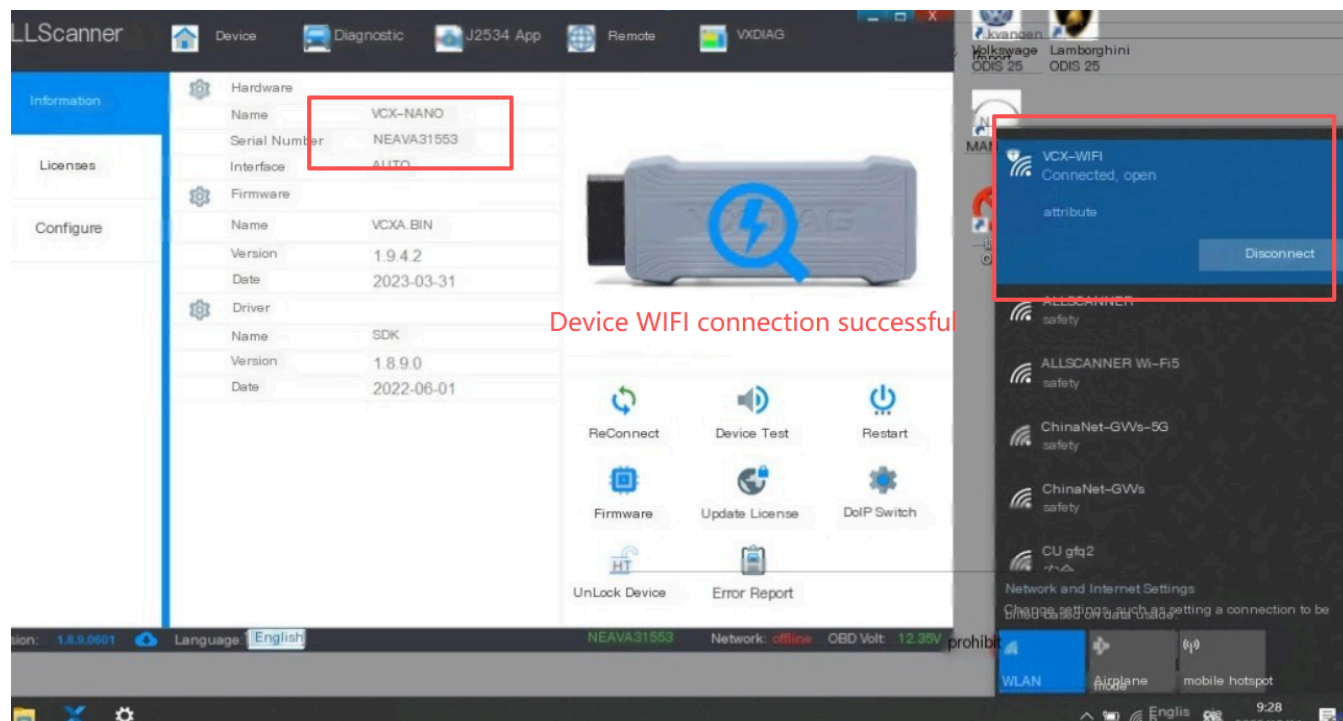


Airplane mode



mobile hotspot

This status indicates a successful connection.



iv. 6154 VCX NANO ODIS-S Service Edition Driver Settings

##Tools → Diagnostic Interface → Select VAS 6154 → Use the Selected VCI:

The screenshot displays the 'Offboard Diagnostic Information System Service - 25.0.3 (Confidentiality level: confidential)' interface. The main window shows a 'Specify VCI' dialog box with a table of found VCI devices. The table has columns: 'Diagnose the type of hardware', 'serial number', 'ID', and 'available'. The first row is 'J2534 PassThru' with serial number '5120267' and ID '00'. The second row is 'VAS 6154' with serial number '5120267' and ID '00'. The 'available' column shows 'idle' for both. A red box highlights the 'VAS 6154' row, and a red arrow points to the 'Use the selected VCI' button. Another red arrow points to the 'Unified Connection' button. The sidebar on the right shows the 'Diagnostic interface' selected under the 'operation mode' section. The bottom status bar shows '12.63 V' and a battery icon.

Commission Order: --- Car identification number: ---

VIN:

Using guided fault inquiry work

Please ensure that a connection has been established to the car. If it is not possible to manually input the VIN, there is no local communication for the location of the vehicle. Please press 'Prepare for Offline Mode'. Tool Received work.

Start diagnosis Continue diagnosis Prepare for offline mode

Privacy Policy

All rights reserved by Volkswagen AG. All rights reserved, including but not limited to reproduction, distribution, and public dissemination. (Confidentiality level: confidential)

operation mode

- diagnosis
- Component diagnosis
- Manufacturing status document
- self-diagnosis
- refresh
- measurement technology
- information
- management

report y

data y

tool

search

Diagnostic interface

test drive

12.63 V

FFBOARD

DIAGNOSTIC

INFORMATION

SYSTEM

SERVICE

Start diagnosis Continue diagnosis and prepare for offline mode

v. VCX NANO also offers the following models of single bike equipment to choose from.

Original vehicle diagnostic functions supported			
Brand	Model	Original diagnosis software	Support
 VW	Volkswagen, SIAT, Skoda, Bentley, Lamborghini	ODIS & ODIS-Engineer	✓
 AUDI	Audi	ODIS & ODIS-Engineer	✓
 JLR	Jaguar, Land Rover	JLR SDD	✓
 VOLVO	Volvo	Volvo VIDA	✓
 GM	Chevrolet, Buick, Cadillac, Opel, Horton	GM GDS2 & Tech2Win & RDS	✓
 FORD	Ford	FORD IDS	✓
 MAZDA	Mazda	MAZDA IDS	✓
 TOYOTA	Toyota, Lexus, SAIN	TOYOTA Techstream TIS	✓
 HONDA	Honda, Acura	HONDA Diagnostic System HDS	✓

 The copyright of the original software belongs to its owner, please purchase authorized genuine software!

Super cost performance

VCX nano is widely used by vehicle manufacturers for ECU online diagnosis and programming

